

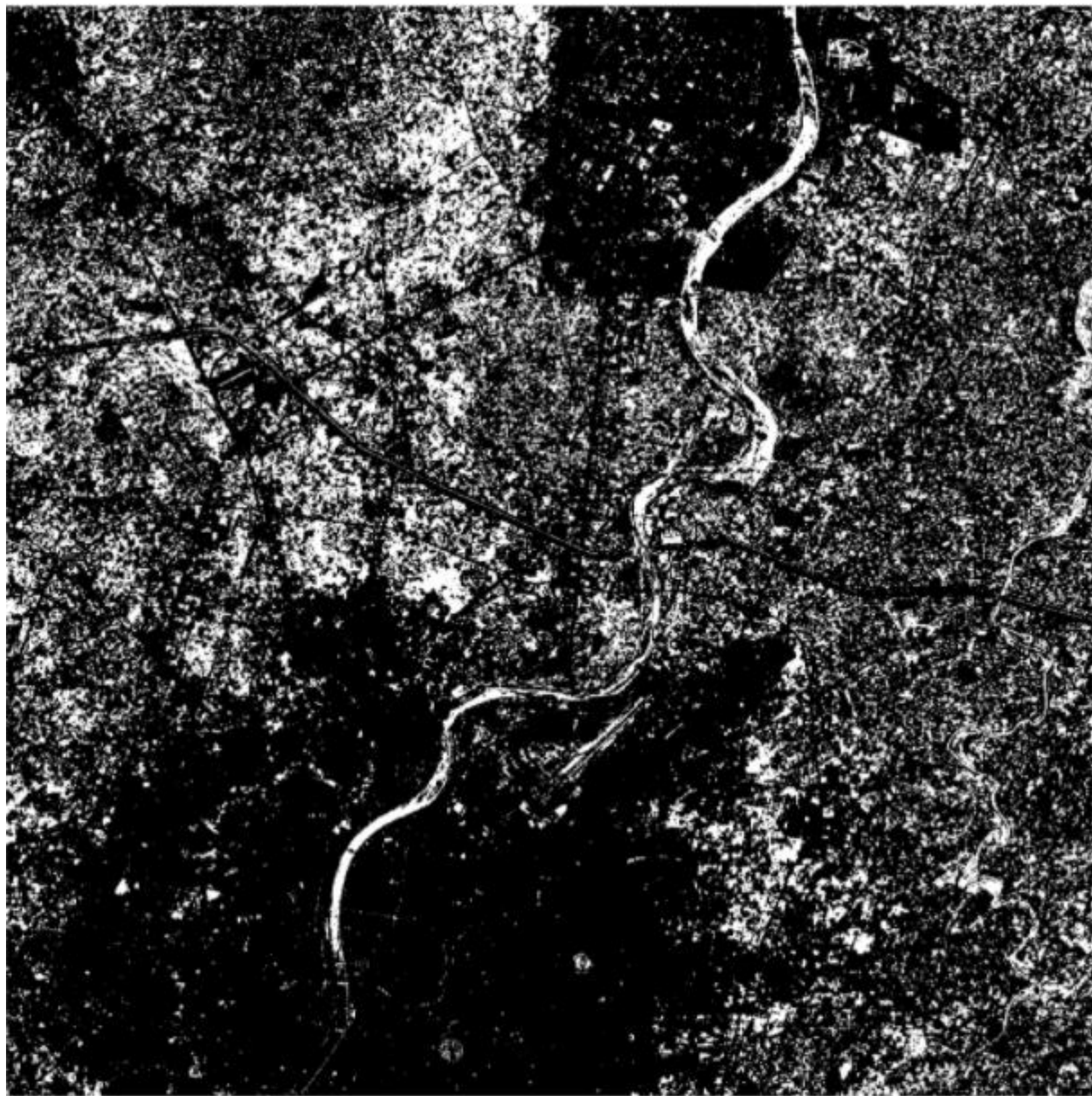
Title: Forecasting future Infrastructure developmentof Ahmedabad city based on past Infrastructure development



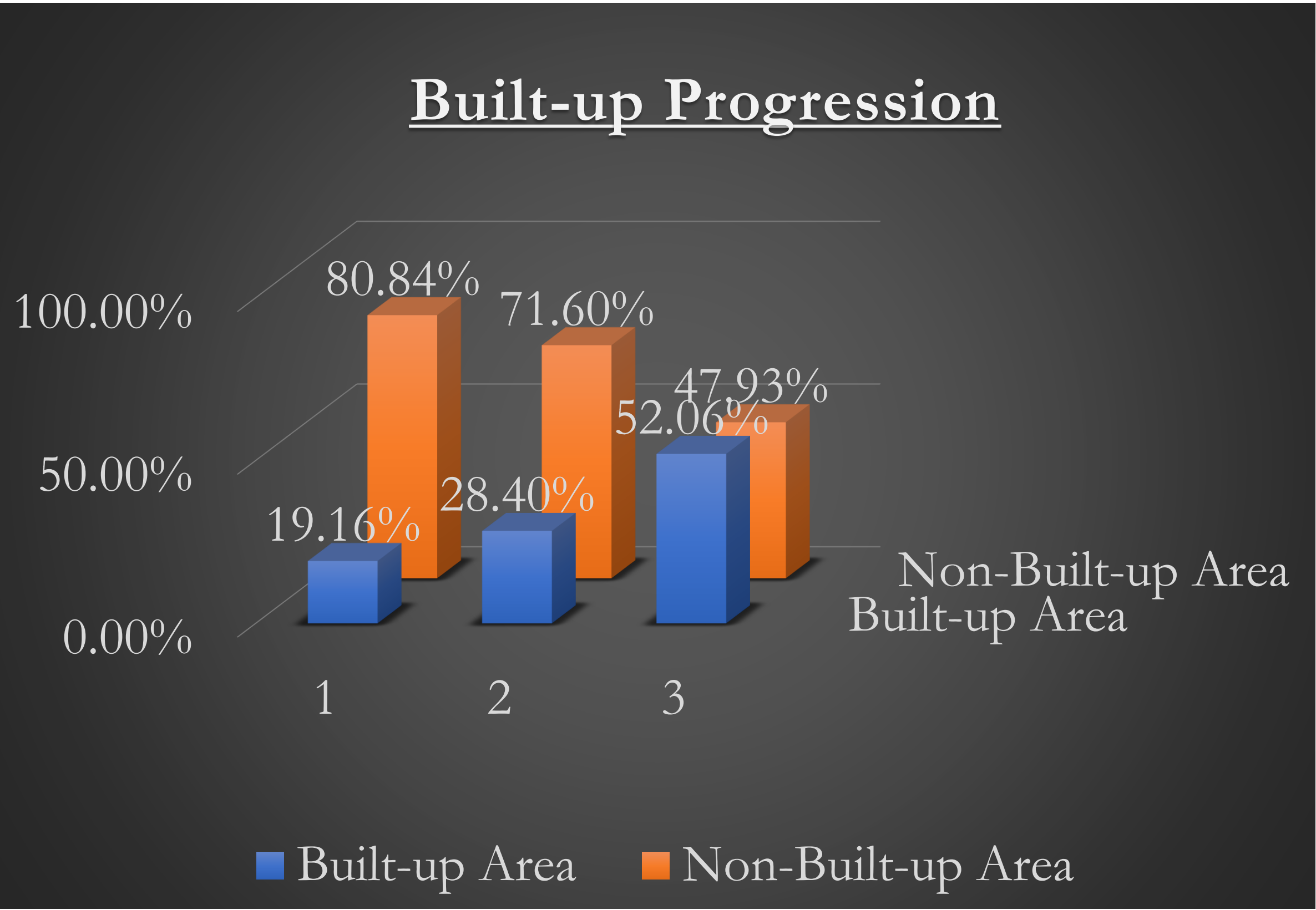
Ahmedabad Built-up Area Map-
December 2011



Ahmedabad Built-up Area Map-
December 2015



Ahmedabad Built-up Area Map-
December 2019



Map description and analysis

Summary

For preparing the map, we have taken the data from BHUVAN portal of three years of December 2011, 2015 and 2019. Initially by conducting supervised classification we generated classification report, by using the band combination of 2-3-5, where we divided or classified it into two major divisions which were Built-up and Non-Built-up area, firstly before doing this we had to convert the original data to RGB where we used the combination 4-3-2, Doing which we generated MC_ID report where we got data which is in the percentage of Built-up and Non-Built-up area respectively which as follows:-

Sr. No.	Year	Built-up Area	Non-Built-up Area
1	2011	19.16%	80.84%
2	2015	28.40%	71.60%
3	2019	52.06%	47.93%

Conclusion

By the classifying and retrieving the data of Built-up and Non-Built-up area of three different years as mentioned above, by analysing different practical parameters we conclude that in 2025, the Built-up area will reach to approximately 65%. The Map which is prepared can be used for understanding the pattern of future growth of Ahmedabad.

Team member: 1)Ankit Chandelia 2) Sahaj Patel	Team Name: Urban Threshold
	Topic: Built-up Area Map
Organization: Institute of Technology, Nirma University	
Contact/email: 17bcl101@nirmauni.ac.in	